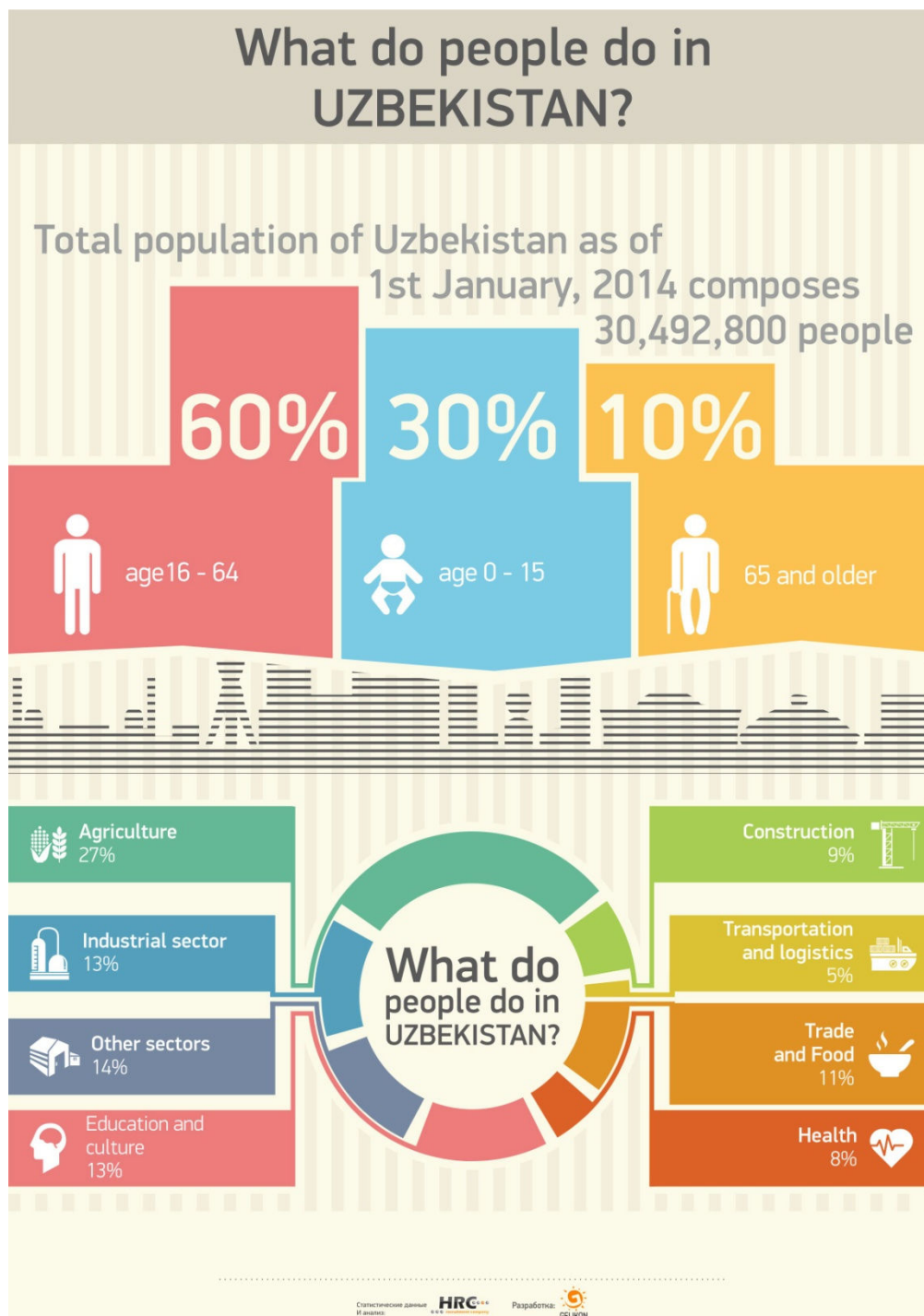


WHAT DO PEOPLE DO IN UZBEKISTAN?

Total population of Uzbekistan as of 1st January, 2014 composes 30,492,800 people, of whom 30% of the population is under 15. The older generation with age above 65 years is 10% of the population or 3,090,800 people. The main part of the population composes the people of working-age between 16 to 64 years – which is 60% of the population. According to official statistics, the number of unemployed is 639.7 thousand or 4.9% of the active population. (Note: unemployed people are recognized if they officially registered at the labor registry office as job seekers). Total number of economically active population is 13,163,000 people as of end of 2013.



Most of the active population is involved in agriculture - 1615.3 thousand or 27% of the active population, followed the people of the industrial sector - 13%, and education and culture industries busy with 14% of the active population.

It should be noted that 77% of the total employed in the economy is the small business - 9604.0 thousand. people. Most of the small and medium entities also involved in agriculture and industry.

55.8 percent of total GDP in Uzbekistan in 2013 was produced by SME sector.

CONTACTS:

«HR Capital Consulting» LLC

Address:

Office, 9, 3rd floor, 1 Niyozbek Yuli Street
Tashkent, 100000, Uzbekistan

Tel: (+998 71) 150-4230

Fax: (+998 71) 235-6134

E-mail: info@hrc.uz

www.hrc.uz

The information herein is believed by HRC to be reliable and has been obtained from sources believed to be reliable, but HRC makes no representation as to the accuracy or completeness of such information.

Opinions, estimates and projections in this review constitute the current judgment of the author as of the date of this review. This Market review is provided for informational purposes only.

Market review prepared for distribution among the professional participants of labor market.

Additional information relative to labor market or issuers discussed in this report is available upon request.

© 2006-2014 HRC